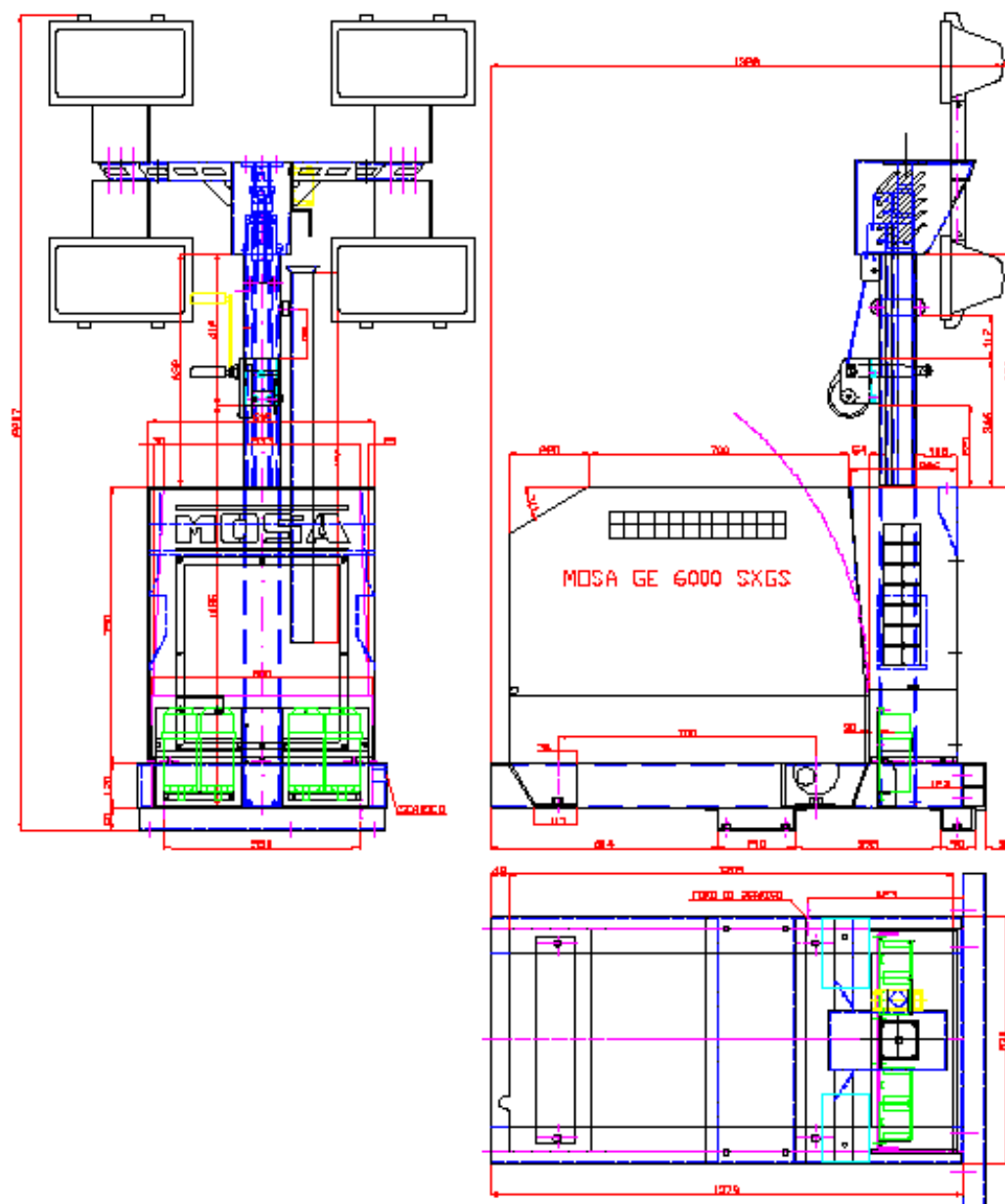


PRODUCT INFORMATION

MANUAL LIGHTING TOWER 5.5 m TYPE TFMM5.5 integrated with a Mosa GE 6000 SX/GS-EAS and with 4x400W METAL HALIDE LAMPS

- **Five and a half (5.5) meters maximum height**
 - Telescopic steel mast with 4 sections, galvanized with 20 micron of material guaranteed for life in outdoor applications
 - Manual raising/lowering of the tower with a manual winch and a system of stainless steel ropes.
- **1800m² of illuminated area**
 - 4 metal halide lamps 400W each
 - Electrical coiled cable for the ignition of the lamps
 - Bulbs included in the floodlights
- **2 rugged stabilizers adjustable in height**
- **Certified resistance at a maximum wind speed of 80 Km/h**
- **Manual winch with automatic brake maximum load capacity 350 kg**
- **Structure**
 - Extremely compact; usable by a single operator.
 - Special pockets to permit an easy action with a forklift
 - Hard wearing powder coated paint finish
- **Integrated with a generator Mosa GE 6000 SX/GS-EAS with 6 kVA 1-phase power.**
- **Mounted on a chassis prepared for a road or site trailer**
- **Documentation**
 - Owner's manual
 - CE conformity declaration



REV.	DESCRIZIONE	DATA	DESCRIZIONE	VERIFICATO
Disegnato da:	Disegno N°	9276	Materiali	Peso Kg.
Verificato da:	Giorno		Modello	Scale
Trattamento	Descrizione		KIT MOSA GE600D	Quantità
Data	LAY-OUT			Indice revisione
			<p>Staccare accuratamente e smussare gli spigoli vivi La tolleranza sulle quote lavorate è $\pm 0,2$ mm Spigoli con quoti $5m = 1 \times 1,5$ oppure $R=1$ mm</p> <p>La ditta tubale i propri disegni a norma di legge</p>	